



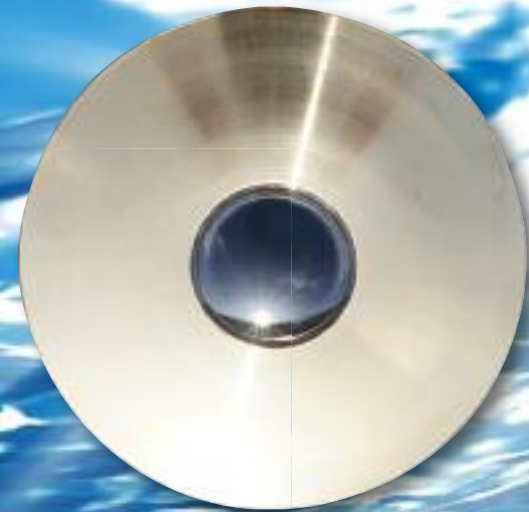
barracuda

THRU-HULL

C A M E R A S

IRIS[®]

3 NEW WAYS TO SEEBENEATH THE SEA



Barracuda is the new range of Thru-Hull Cameras from Iris Innovations, available in three High Resolution Options...

BARRACUDA-LITE

Features a high resolution 800TVL Sony Effio-P Colour / Mono Camera module with composite video output

BARRACUDA-HD

Features a High-Definition 1080P HD-SDI Camera Module with Digital Output for viewing on Hi-Def displays.

BARRACUDA-IP

Features a 5MP High Def, Panoramic Network IP Camera with integrated Digital Pan, Tilt, Zoom to allow full control despite no moving parts! View on your PC, Laptop, Network Display, Cell Phone or Tablet! PoE Power Connection.

Control of the new Barracuda-IP model is achieved in conjunction with Iris Centre camera management software, allowing digital pan, tilt and zoom functionality as well as video recording, playback and management. Iris Centre can handle multiple cameras and is available for download.

barracuda+ lite

For viewing on all chartplotters with composite video input, TV's with AV input or for interfacing into a PC via a video capture device, the Barracuda-Lite camera features an extremely high resolution analogue camera with SONY EFFIO-P chipset, 800TVL resolution, WDR (Wide Dynamic Range) and DNR (Digital Noise Reduction) processing. As with all Barracuda models, the LITE is built into a solid anodised aluminum body complete with a highly resilient aluminum bronze bezel and strengthened acrylic lens cover. Connection to the LITE is via a single CAT5 cable for power and video.

barracuda+ hd

At the heart of the Barracuda-HD is a high definition HD-SDI module which delivers sharp, real-time 1080P HD video for playback on compatible chartplotters or High-Def TV's and displays via an HDMI or HD-SDI input. Barracuda-HD outputs over 2 million pixels per frame and therefore provides a much higher resolution output than standard analogue CCTV cameras. In addition, Barracuda HD also supports D-WDR and 3D-DNR processing guaranteeing trully exceptional High Definition video. Power and Video connection to the camera is via a single 75Ω Coaxial Cable.

barracuda+ ip

If you want more from your through hull camera than superb quality video, Barracuda-IP is the camera for you!

With it's built-in 5MP Network-IP camera engine, not only are you guaranteed the very best in video quality, but Barracuda's unique D-Control lets you 'virtually' pan, tilt and zoom around the cameras ultra wide angle, Panoramic field of view.

Using Iris Centre software on your PC, Laptop, Tablet or SmartPhone, set the camera to either 180° or 360° mode and drag around the image to explore the underwater scene before you. The camera's vast field of view and extremely high resolution mean you can zoom deeper into the scene then move around by using your mouse or dragging the screen depending on your device. As everything is handled digitally, there are no moving parts to go wrong!

Iris Centre Software also acts as a recording tool to capture your footage directly onto your computer hard-drive, as well as a management tool to enable playback of your footage.

Barracuda-IP is an amazing underwater camera that can be used to entertain and educate - not forgetting it's potential as a fully functioning security device for the detection of sub-surface threats.

By combining your digital tools, why not control your camera wirelessly by tablet across your onboard WiFi network and even beam the amazing underwater footage onto a high definition TV via a media casting device? By utilising the very latest in Network-IP and High Definition Digital Camera technology, anything is possible!



Barracuda-IP
As viewed in IrisCentre Camera Management Software.

BARRACUDA-IP: Key Features Include

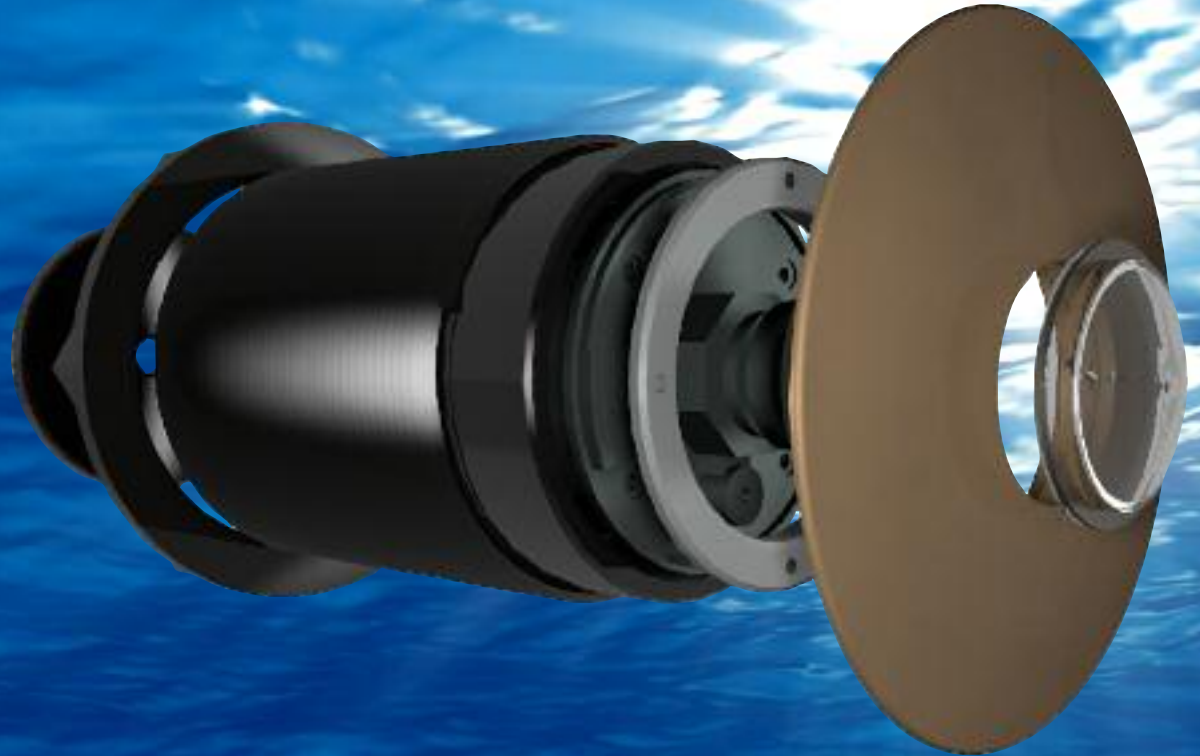
- Aluminium Bronze Bezel
- Hard Anodised Aluminum Housing
- IP68 Waterproof RJ45 Connection
- Dimensions: 118° mm Bezel. Shaft: 128mm. Shaft Diameter (Hole Cutout): 90mm (3.54")
- Weight: 1.737Kg
- Image Sensor: 5MP 1/2.5"
- Lens: 1.05mm Fisheye (180° HFOV), F2.8
- Power: PoE - IEEE 802.3af, Max 4.5W
- Approvals: CE EN55022 Class A, EN55024, LVD, RoHS, FCC Part15-B
- IP Model Resolution: 2592 x 1920
- Compression: Motion JPEG, MPEG-4, H.264
- Streaming: Multiple Stream: Supports up to 2 independent streams, controllable framerate and bandwidth CBR/VBR.
- Local Storage: microSD/SDHC
- Browser Support: Microsoft IE, Firefox, Chrome
- Network Protocols: TCP/IP, UDP, DHCP, PPPoE, HTTP, HTTPS, DNS, DynDNS, NTP, FTP, SMTP, RTP, RTSP, RTCP, 3GPP, UPnP, IPv4, SAMBA (Client), (NAS), IGMP, ICMP, ARP

BARRACUDA-Lite: Key Features Include

- Aluminium Bronze Bezel
- Hard Anodised Aluminum Housing
- IP68 Waterproof RJ45 Connection
- Dimensions: 118° mm Bezel. Shaft: 128mm. Shaft Diameter (Hole Cutout): 90mm (3.54")
- Weight: 1.7Kg
- Image Sensor: 1/3" Sony Super HADII (960H)
- Lens: 3.6mm Megapixel Lens
- Power: 12VDC via VPD Balun (Supplied) 1.2W
- Video: Composite Video 1VP~P / NTSC or PAL
- Lite Model Resolution: 800TVL (30fps)
- Total Pixels: 1020 x 596 = 607,920

BARRACUDA-HD: Key Features Include

- Aluminium Bronze Bezel
- Hard Anodised Aluminum Housing
- IP68 Waterproof 75Ω BNC Connection
- Dimensions: 118° mm Bezel. Shaft: 128mm. Shaft Diameter (Hole Cutout): 90mm (3.54")
- Weight: 1.7Kg
- Image Sensor: 1/3" Panasonic CMOS MN3404
- Lens: 3.6mm Megapixel Lens
- Power: 12VDC via VPD Balun (Supplied) 1.4W
- Video: HD-SDI / NTSC or PAL
- HD Model Resolution: 1920 x 1080 (30fps)
- Total Pixels: 2010 x 1108 = 2,227,080



IRIS INNOVATIONS USA CORPORATION

1515 SE17th Street, Suite A133.
Fort Lauderdale 33316. Florida. USA
Tel: +1 (954) 833 9381 / email: info@boat-cameras.com

IRIS INNOVATIONS UK LIMITED

Units 8 & 9 Swanwick Business Centre, Bridge Road.
Swanwick. Hampshire SO31 7GB. United Kingdom
Tel: +44 (0)1489 570797 / email: info@boat-cameras.com

www.boat-cameras.com / www.boat.camera