



IRIS  
≡≡≡



## Affordable Night Vision

NightWatch from Iris empowers boat owners by delivering crisp infra red thermal imaging without breaking the bank.

With Nightwatch, your time on the water is no longer limited to daylight hours or perfect visibility.

In the same price band as conventional marine cameras, Night-Watch has redefined the world of thermal imaging cameras. Use as a stand alone device, or combine with our IRIS505 NightWatch controller depending on your budget. NightWatch is a vital tool for enhancing on board safety, security and situational awareness.

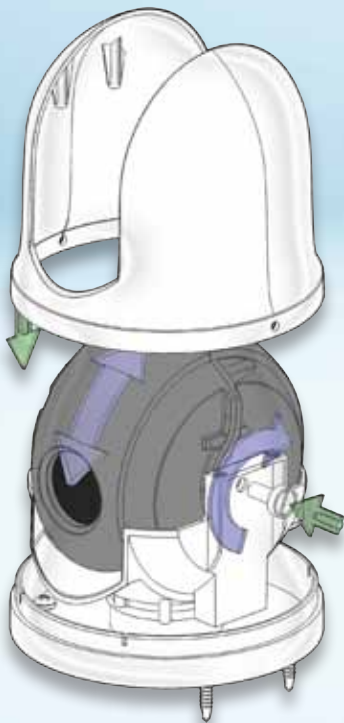


# Compact, Elegant and Simple

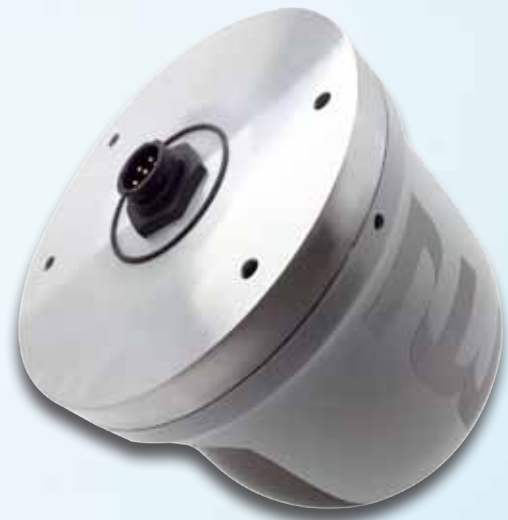
NightWatch has been designed with both the customer and installer in mind. With a compact form factor measuring only 5¾" high by 5" in diameter and based around Iris's best selling range of marine dome camera housings, the camera blends into the aesthetic of your boat perfectly.

The camera's UV stabilised white ABS cowling sits over the elegantly finished inner dome compartment, and locks onto an anodised aluminium base plate to provide a solid fixing point.

Connect power, video and data via a waterproof multipole connector in the centre of the camera. Cables are available in a variety of lengths from Iris. A single cable measuring only 7mm in diameter is all that's required, reducing installation time, hassle and cost.



Note: Camera features controller via optional IRIS505 NightWatch Controller. Protocols available on request.



## Key Features:

Despite NightWatch's incredibly low price tag, the camera boasts some powerful features usually associated with much more expensive models:

- 320 x 240 Resolution
- Ultra Sensitive Thermal Contrast <50mK
- 60Hz Refresh Rate
- Digital 'Smooth' Zoom - 12 Levels.
- 10 Switchable Colour Palettes
- ICE® Contrast Enhancement
- Ball UP / Ball Down Configuration
- Detection Range (Vessel 2.3m wide) of up to 2km
- Ultra Low Power Consumption <400mA
- Wide Voltage Range - 8~36VDC
- Composite Video Compatible with All Major Chart Plotters



Specification	Model: IRIS205 NightWatch	
Sensor	Vanadium Oxide Micro Bolometer	
Resolution	320x240	
Sensitivity	<50mK	
Spectral Range	8~14μ	
Lens	19mm f1.1	
HFOV	16°	
Detection	Vessel: 2380m	Human: 1000m
Identification	Vessel: 500m	Human: 200m
Palettes	White Hot, Black Hot, Red Light, Arcus, Inferno, Soft Light, Sunset, Memorium, Flamma Articus, Ocean, Full Spectrum	
Digital Zoom	12 Step Smooth Zoom	
Mounting	Ball Up / Ball Down	
Contrast	ICE® Contrast Enhancement	
Housing	UV Stabilised ABS Plastic Upper & Inner Dome, Anodysed Aluminium Base	
Tilt Setting	-10° ~ +90° from Horizon - Manual Adjustment / Lock	
Dimensions	5 ¾" High x 5" ø	
Weight	620g	
Environmental	IP66	
Certification	Designed to meet EN60945 Standards	
Connection	IP68 6 Pin Multipole Circular for Power Video & Data - Use with IRIS cables	
Power	8~36VDC	
Consumption	XXXmA @ 12VDC / XXXmA @ 24VDC	
Video	1V P~P Composite Video 75Ω Impedance	
Data	RS485 Serial Data - Use with IRIS505 / IRIS516 Controller	
Protocol	IRIS propriety Protocol - Available Upon Application	
Temperature	-25°C ~ + 55°C	

©2016 Iris Innovations Limited. Information Correct at time of publication. E&OE.



### Iris Innovations USA Corporation

2821 SW23rd Terrace, Unit 5  
Fort Lauderdale, Florida. 33312.  
USA

Tel: (954) 533 9381  
email: [info@boat-cameras.com](mailto:info@boat-cameras.com)  
[www.boat-cameras.com](http://www.boat-cameras.com)

### Iris Innovations UK Limited

Units 8 & 9 Swanwick Business Centre  
Bridge Road, Swanwick. Hampshire SO31 7GB.  
United Kingdom

Tel: +44(0)1489 570797  
email: [irisuk@boat-cameras.com](mailto:irisuk@boat-cameras.com)  
[www.boat-cameras.com](http://www.boat-cameras.com)