

cmac

Camera Management & Control System for Boats



CMAC-N16-1TB-G





Key Features:

- Plug'n'Play Black Box Solution
- Connect up to 16 x IP Cameras
- Hosts IrisControl App for Garmin OneHelm Platform
- Anti-Vibration HDD Caddy with 1TB Drive (4TB Max)
- Built in Network Video Recorder
- USB Touch Interface for Garmin 8xxx series MFD's
- Very Stylish & Compact Case with Rugged Connectors
- Hi-Def HDMI Video Output
- Wide Input Voltage Range
- Upload Deck Plans & Photos

Applications:

- Luxury Vessels
- Ferry Boats & Passenger Vessels
- Sports Fishing Boats
- Engine Room Monitoring
- Law Enforcement & Military
- Wind Farm Vessels
- Aquaculture & Fisheries
- Motor Cruisers
- Yachts

CMAC-N16 on board camera management, recording and control system from Iris is the definitive black box solution for your boat's surveillance, safety and security cameras. Hosting our feature rich and intuitive IrisControl App for Garmin's Onehelm platform, CMAC incorporates a network video recorder and hard drive in a quick release, anti vibration caddy and web connectivity for remote access.

Connect your network cameras, upload your deck plans and photos's, then configure your system by dragging and dropping device icons into place and setting up automated views and macro routines.

Switch your cameras or multi-cam views by choosing the corresponding icon on your deck plan. For larger vessels there are no limits to the number of plans or photos you can upload. As well as switching cameras, the IrisControl App supports an Automation feature with which you can set off a chain of instructions from an icon press.

The CMAC N16 is shipped with a 1TB HDD (expandable to 4TB) installed in its shock proof removable drive caddy which makes it easy to remove the drive to examine recorded video footage and events on an external computer.

Intuitive touch control is achieved using the IrisControl App for Garmin's OneHelm platform on Garmin 8xxx series chart plotters with further integration in the pipeline.

Use the IrisControl App for super accurate PTZ control and to access all your cameras extended features.

CMAC is user-upgradable, so as new features are announced you can easily add these to your interface making your system even more powerful.



CMAC-N16

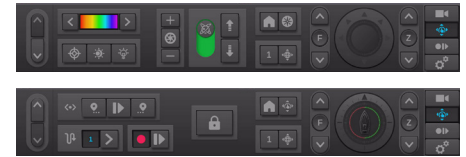
16ch Camera Management System with Network Recording & IrisControl App

IRIS

Camera Controls

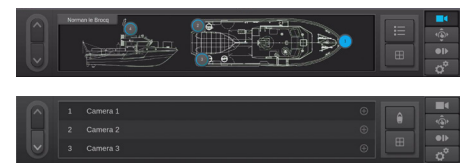
Iris Control's virtual joystick provides smooth, accurate control of your PTZ and Thermal cameras from networked chart-plotters completely eliminating the need for additional controller hardware on your helm.

As well as Pan, Tilt, Zoom and focus controls, we've included thermal palette and shutter controls, gyro toggle and trim controls, day / night and Infra Red LED ON/OFF controls, scan and preset controls and buttons to jump to AIS tracking controls and Drone operation. CMAC™ also supports USB Touch Control to allow precise touch control from the video feed from Chart-Plotters or screens supporting USB Touch.



Customise Deck Plans & Photos

Up-load deck plans or photos into your CMAC™ system then drag and drop camera, preset and alarm icons to provide instant switching, control and feedback. You can load up as many deck plans or photos as you like and these are navigated by means of scroll buttons which neatly animate through your plans. Why not use your own photos to represent instrumentation panels and then simply place preset icons over your dials and displays to instantly drive a PTZ camera to look at the readings?



With your camera icons positioned on the deck plan, selecting the appropriate icon will switch video and also enable control of any PTZ cameras.



Alarm icons will flash when triggered and can be armed and disarmed via the icon. Preset icons can be placed to send PTZ cameras to monitor a specific position at the touch of a button. If you don't want to upload your own images, simply select your devices from the scroll-down text menu.

Record & Playback

CMAC™ systems feature a built-in digital video recorder and the Iris Control App includes a virtual control panel to provide access to the recorder's functions.



The NVR control panel within Iris Control provides access to the record module's menu system for full device configuration, including input naming, video motion detection settings, search and playback of recordings and much more.

Configure Cameras, Automation (Presets & Macros)

As well as naming cameras, deck plans, photos, alarm and preset icons, Iris Control's set up menus are simple and intuitive and let you configure preset positions, camera image and configure mirror and invert, PTZ camera home position and software upgrades.

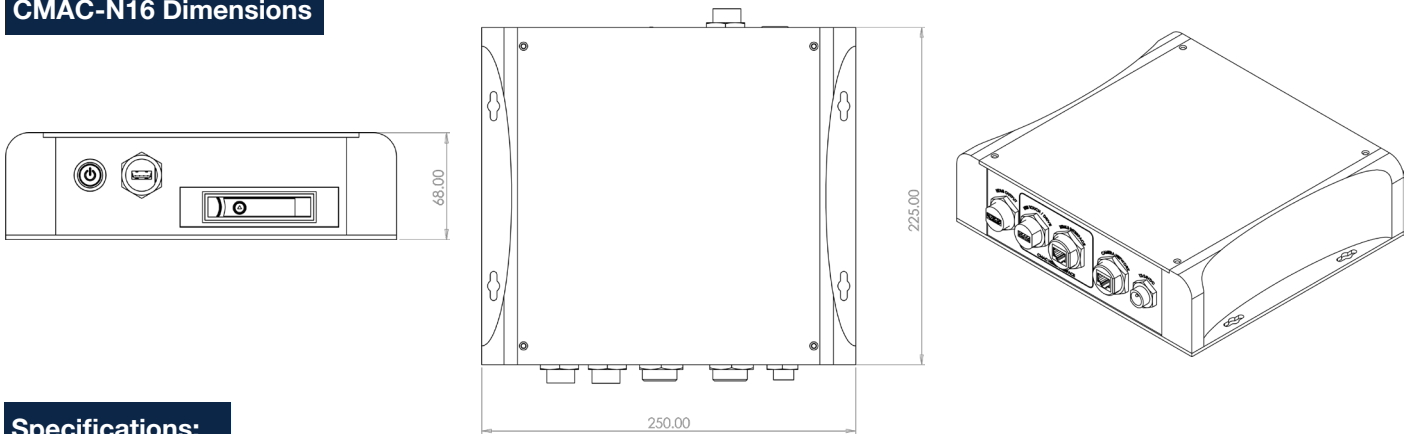


CMAC System Packages

- 011-8002-002 1 x CMAC-N16 System
1 x PoE 4 Power over Ethernet Injector
4 x IRIS-S460 Stainless Mini IP Dome Cameras
- 011-8003-002 1 x CMAC-N16 System
1 x PoE 4 Power over Ethernet Injector
2 x IRIS-S460 Stainless Mini IP Dome Cameras
2 x IRIS-S436 Stainless Mini IP Recess Cameras

Contact your Iris dealer for other package offers.

CMAC-N16 Dimensions

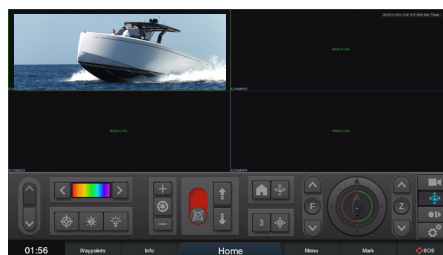


Specifications:

	CMAC-N16-1TB-G
HVR System Processor	Hi3521D
Video Codec	H.265
Camera Capacity	16 x IP Cameras @ 1920 x 1080P Resolution,
Connectivity	Single RJ45 for Connection to Camera Network, RJ45 Connection for Garmin Network, USB for Garmin Touch / System Upgrade, USB for NVR Configuration & file management, HDMI Video Output, DC Power Input
Storage	1 x Anti Vibration SATA II 2.5" HDD Caddy for Removable Storage (1TB HDD Supplied) / 8TB Capacity
Video Output	1 x HDMI
Control Interface	IrisControl App for Garmin OneHelm Platform
USB Touch	Additional USB Touch Control for Supported MFD's / Devices
IP Camera Support	All IRIS IP Cameras / ONVIF Profile-S Compliant IP Cameras
IrisControl Features	User-Uploadable Deck plans / photos, Camera selection, PTZ camera, Single Screen - Split Screen Select, Thermal Camera Features: Gyro, Trim, NUC, Palettes, Memory Presets, Scans Tours, Absolutated Referencing, ICE Image Enhancement, NVR Controls
Firmware Upgrade	Via USB (auto-upgrade from root directory of USB Drive)
Alarm Integration	TBA
AIS Tracking Features	TBA
Chart Plotter Compatibility	Garmin 7xxx: Requires HDMI to CVBS Convertor (USB Touch not available) / Garmin 8xxx - All Features. Others TBA
Power	+12VDC ~ +24VDC / <2A @ 12VDC
Operating Temperature	-10°C ~ +55°C
Dimensions	250 x 255 x 68mm
Weight	4.45Kg
Material	Anodised Aluminium Plates / ABS Plastic End Cheeks with Wood Effect Veneer



Upload deckplans & photos and configure with camera, alarm and automation icons for one-touch activation.



Extended camera feature controls, precise virtual joystick and multiple camera view options



Virtual Network Video Recorder Front Panel operation. Select and control video playback and recorder features.